

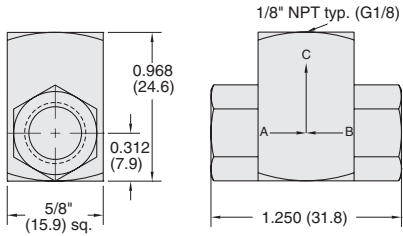


# SHUTTLE VALVES

## Poppet Type Shuttle Valves



Brass body, Delrin Poppet, Buna-N seal



**Medium:** Air, Water or Oil

**Input Pressure:** 300 psig/21 bar - air; 1,000 psig/70 bar - hydraulic

**Air Flow:** 14 scfm @ 50 psig; 26 scfm @ 100 psig; 630 l/min @ 6 bar

**Mounting:** Direct or in-line

**Operation:** Flow from "A" to "C" or "B" to "C"

**Pressure to Shift:** 1/2 psig approx.



**Note:** Shuttle valves should not be used as a pressure selector

Part No.	Description
----------	-------------

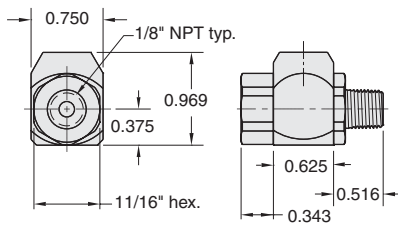
MISV-1	Poppet Shuttle Valve, 1/8" NPT
--------	--------------------------------

MISV-1-MG	Poppet Shuttle Valve, G1/8
-----------	----------------------------

## J-Series Shuttle Valves



**Part No.**  
ISV-2FPF



Poppet type shuttle (double check) valve. Brass body, stainless steel shuttle, Buna-N seal

**Medium:** Air, Water or Oil

**Input Pressure:** 300 psig max.

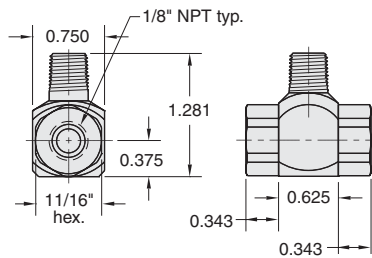
**Air Flow:** 30 scfm @ 50 psig  
50 scfm @ 100 psig

**Mounting:** Direct or in-line

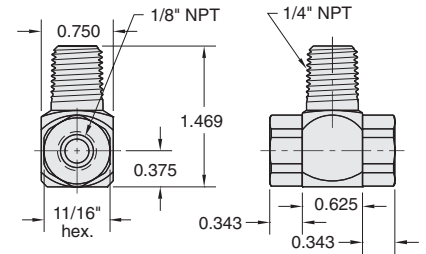
**Pressure to Shift:** 1 psig approx.



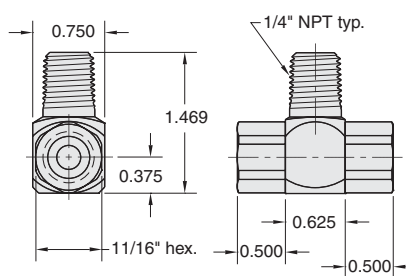
**Part No.**  
ISV-2PFF



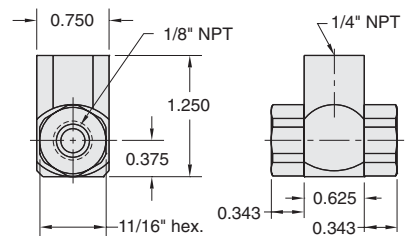
**Part No.**  
ISV-2WFF



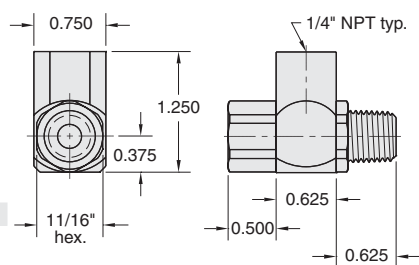
**Part No.**  
ISV-2WYY



**Part No.**  
ISV-2YFF



**Part No.**  
ISV-2YYW



**Part No.**  
ISV-2YYY

